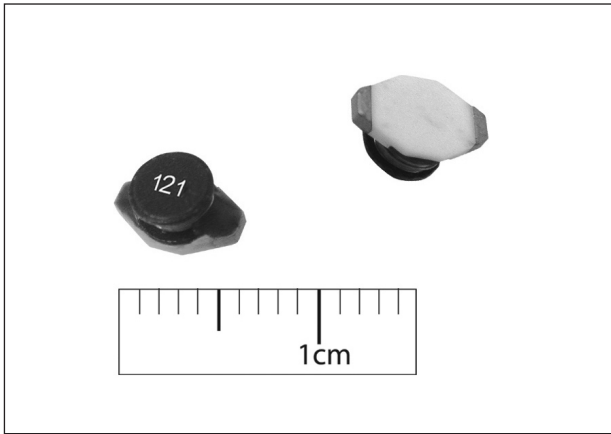


EA  
03



● PART NUMBERING

EA - □□□ □ □□ □ □  
(1) (2) (3) (4) (5) (6)

- (1) Series
- (2) Inductance
- (3) Tolerance
- (4) Dimension
- (5) Material
- (6) Internal Serial No.

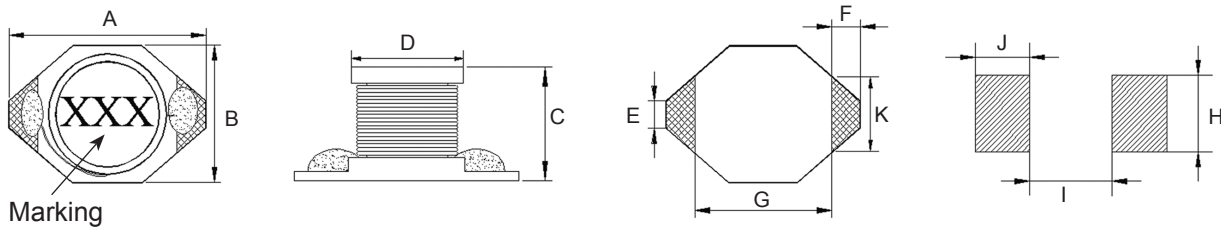
● FEATURES

- Small and low profile.
- Exceptionally low DC resistance.
- Flat top for reliable pick and place operations.

● APPLICATIONS

- DC/DC converters
- Laptops and PDAs
- Step-up or Step-down converters
- Flash memory programmers
- LCD displays

● CONFIGURATIONS & DIMENSIONS



Unit : mm

SERIES	A	B	C	D	E	F	G	H	I	J	K
EA-63A	6.60 Max.	4.45 Max.	2.92 Max.	3.94 Typ.	1.27 Typ.	1.02 Typ.	4.32 Typ.	3.56 Typ.	4.06 Typ.	1.40 Typ.	3.05 Typ.

• For packaging information, please refer to page P.39.

## ● ELECTRICAL CHARACTERISTICS

New Part No.	Old Part No.	L ( $\mu$ H)	SRF (MHz)Typ.	DCR ( $\Omega$ , Max.)	Isat (A, Max.)	Irms (A, Max.)
EA-10A□63A□□	SDOG1608-1R0□	1.0	130	0.04	2.90	2.90
EA-15A□63A□□	SDOG1608-1R5□	1.5	115	0.05	2.80	2.60
EA-22A□63A□□	SDOG1608-2R2□	2.2	90	0.06	2.40	2.30
EA-33A□63A□□	SDOG1608-3R3□	3.3	70	0.07	2.00	2.00
EA-47A□63A□□	SDOG1608-4R7□	4.7	50	0.09	1.50	1.50
EA-68A□63A□□	SDOG1608-6R8□	6.8	45	0.13	1.40	1.20
EA-100□63A□□	SDOG1608-100□	10	35	0.16	1.10	1.10
EA-150□63A□□	SDOG1608-150□	15	30	0.23	1.20	0.90
EA-220□63A□□	SDOG1608-220□	22	20	0.37	0.80	0.70
EA-330□63A□□	SDOG1608-330□	33	15	0.51	0.60	0.58
EA-470□63A□□	SDOG1608-470□	47	14	0.64	0.50	0.50
EA-680□63A□□	SDOG1608-680□	68	11	0.86	0.40	0.40
EA-101□63A□□	SDOG1608-101□	100	9	1.27	0.30	0.31
EA-151□63A□□	SDOG1608-151□	150	6	2.00	0.25	0.27
EA-221□63A□□	SDOG1608-221□	220	5.5	3.11	0.20	0.22
EA-331□63A□□	SDOG1608-331□	330	5	3.80	0.16	0.18
EA-471□63A□□	SDOG1608-471□	470	4	5.06	0.15	0.16
EA-681□63A□□	SDOG1608-681□	680	3	9.20	0.12	0.14
EA-102□63A□□	SDOG1608-102□	1000	2	13.8	0.07	0.10

EA  
04

- Tested at 25°C., 100KHz, 1V.
- Temperature rise : 40°C Typ. at I<sub>rms</sub>
- Inductance drop : 30% Max. at Isat
- Operating temperature : -55°C to +105°C
- Storage temperature : -40°C to +85°C